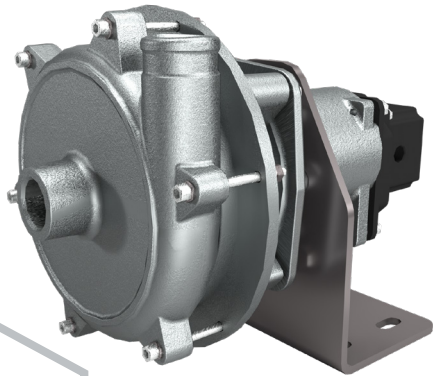


**STROBL
PUMPEN**

Truck mixer pumps



General Description

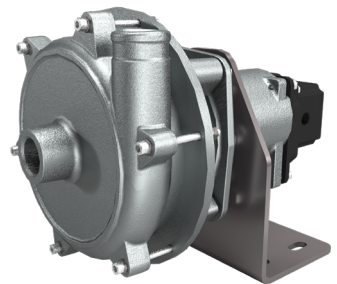
Our truck mixer pumps FMP are for direct mounting to vehicles/ construction machines. The pumps are designed for direct extension to the drum drive or hydraulic system.

Characteristics

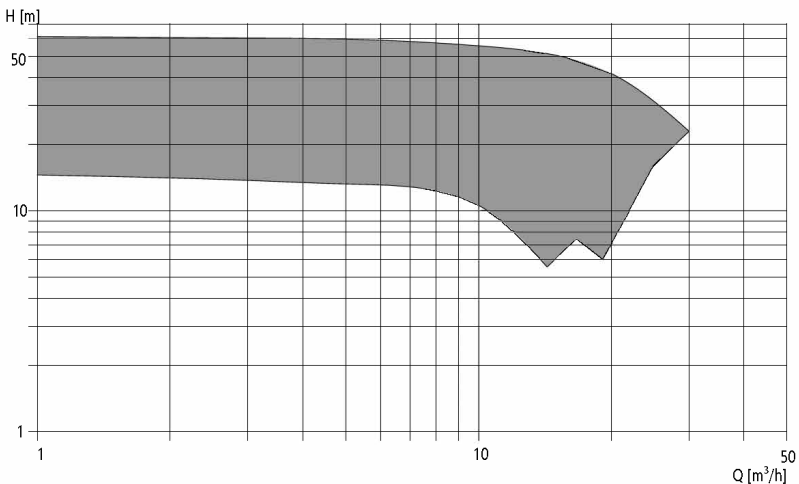
- ⦿ Connections threaded or hose
- ⦿ Integration into hydraulic system of vehicles
- ⦿ Various drive options

Operation data

Flow:	Q to 30 m ³ /h
Head:	H to 50 m
Motor power:	depending on drive
Design pressure:	16 bar
Connections:	Internal threads



Characteristic curve



Materials

Material	German description	Cast material	German material code number	EU - Description	EU - material code number	ASTM - UNS - description
Cast iron	GG 20	X	0.6020	EN-GJL-200	JL 1030	A48 - Grade 30
	GG 25	X	0.6025	EN-GJL-250	JL 1040	A48 - Grade 35
Nodular c. i.	GGG 40	X	0.7040	EN-GJS-400-15	JS 1030	A536 - 60-40-18
Bronze	G-CuSn10	X	2.1050.01	CuSn10-C	CC480K-GS	B505 - C90700
Aluminium bronze	G-CuAl10Ni	X	2.0975.01	CuAl10 Fe5Ni5-C	CC333G-GS	B505 - C95500
Hard iron	G-X300 CrMo 15-3	X	0.9635	EN-GJN-HV600 (XCr14)	JN 3029	A532 - Class II Type B
hardened steel	42 CrMo 4		1.7225	42CrMo4	1.7225	A322 - G41400
Stainless steel - 316	G-X5CrNiMo 19-11-2	X	1.4408	GX5CrNiMo 19-11-2	1.4408	A351 - CF8M - J92900
Duplex	G-X2 CrNi-MoN 22-5-3	X	1.4470	GX2 CrNiMoN 22-5-3	1.4470	A995-4A -J92905
	G-X2 CrNi-MoCuN 25-6-3-3	X	1.4517	GX2 CrNiMo-CuN 25-6-3-3	1.4517	A995-4A -J93372
	X2 CrNiMoN 22-5-3		1.4462	X2 CrNiMoN 22-5-3	1.4462	A276 -S31803
Super duplex	G-X2 CrNi-MoN 26-7-4	X	1.4469	GX2 CrNiMoN 26-7-4	1.4469	A995-5A - J93404
	X2CrNi-MoCuWN 25-7-4		1.4501	X2CrNiMo-CuWN 25-7-4	1.4501	A276 - S32760
High alloy SS	G-X2CrNi-MoCu N 20-18-6	X	1.4557	GX2CrNiMo-CuN 20-18-6	1.4557	A744 - 6MO - J93254
	X1CrNiMo-CuN 20-18-7		1.4547	X1CrNiMoCuN 20-18-7	1.4547	A276 - 6MO - S31254

Other variants are available on request.



STROBL PUMPEN GMBH & CO. KG
BOSCHRING 3 - 91161 HILPOLTSTEIN

TEL.: +49-9174-97708-0
FAX.: +49-9174-97708-10

INFO@STROBL-PUMPEN.DE
WWW.STROBL-PUMPEN.DE

